



# Working Towards an Informed Decision for Our Community

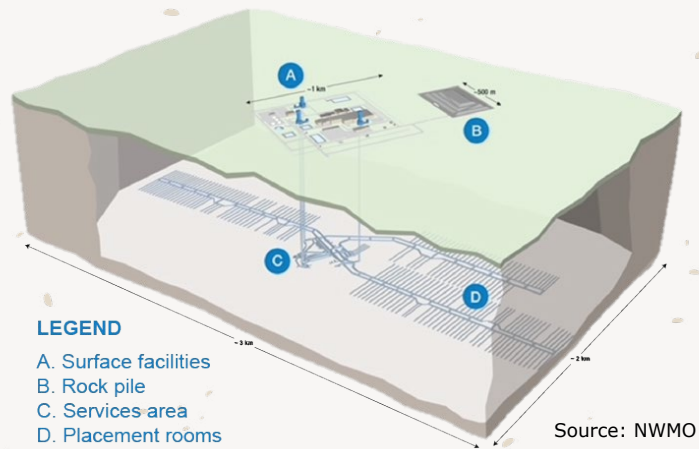
The Municipality of South Bruce is one of two communities being considered to safely store Canada’s used nuclear fuel in a deep geological repository (DGR). To support an informed decision for the community, the South Bruce Nuclear Exploration Team and independent consultants are working to determine if the site is safe for people and the environment, and if the community is willing to host the Project.

## About the Project

In Ontario, nuclear power is used to meet more than half of our electricity demand. Across Canada, over the past 60 years, nuclear power generation has created approximately three million used fuel bundles which are stored in temporary above ground sites. The Nuclear Waste Management Organization (NWMO) was created to design and implement Canada’s plan for the long-term management of used nuclear fuel. They are also studying the potential impacts on South Bruce and the region.

## How?

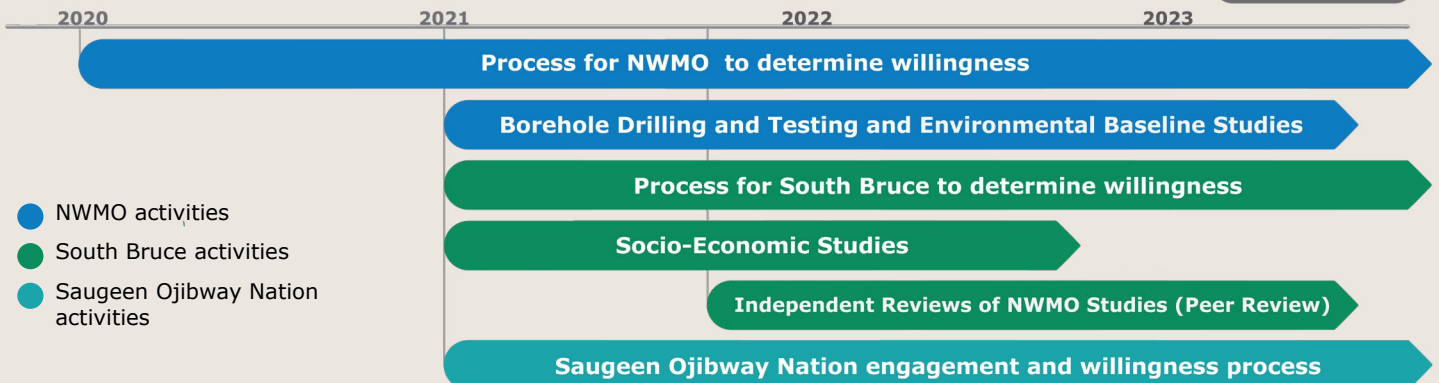
There is a strong international, scientific consensus that storing used nuclear fuel in a DGR is the safest option. This involves securing the used nuclear fuel in a facility constructed deep below ground. This is the approach the NWMO is adopting.



## Timeline

NWMO narrows the site selection to South Bruce and Ignace.

NWMO identifies preferred site



## Our Priorities

Informing the community, determining site safety, and measuring community willingness are the priorities for the next two years.



Information about the Project is available on the South Bruce website: [www.southbruce.ca](http://www.southbruce.ca), through print and electronic publications, and municipal social media accounts. Project staff are also available to answer questions.



Multiple studies are underway to determine the impacts of the Project on human and animal health, water, air, and land. Studies are also being conducted to explore the economic and future growth opportunities the Project could bring.



Determining the community's willingness to host the Project may be the single biggest decision Council will ever make. That's why the process begins with asking the community what information is needed to make a decision and how willingness to host the Project should be measured.

## What is guiding our priorities?

Between December 2019 and February 2020, South Bruce led a comprehensive visioning process to get input on what people care about most. This and other community input, such as significant correspondence from community members, and additional engagement helped shape the 36 Guiding Principles. The Principles focus on safety for people and the environment, ensuring the Project brings meaningful benefits to the community, and ensuring the Municipality has a voice in decision-making.

These Principles are guiding the Municipality's engagement with the NWMO and consideration of the Project.

## What you can do...

### Participate

Community involvement and participation is key. Attend a Community Liaison Committee meeting to get Project updates and to ask questions. Meetings are usually scheduled the first Thursday of every month.

Visit our community engagement tool, [www.southbruceswitchboard.ca](http://www.southbruceswitchboard.ca) to find out more about ongoing studies and to find out how you can participate.

### Stay connected

Reach out any time with your questions, comments, concerns, or if you would like more information.

### South Bruce Nuclear Exploration Team:




Dave Rushton, Project Manager  
[drushton@southbruce.ca](mailto:drushton@southbruce.ca)

Morgan Hickling, CLC Project Coordinator  
[sbclc@southbruce.ca](mailto:sbclc@southbruce.ca)

Steve Travale, Communications/  
Public Relations Officer  
[stravale@southbruce.ca](mailto:stravale@southbruce.ca)



Municipality of South Bruce  
P.O. Box 540 | 21 Gordon St. E  
Teeswater, Ontario N0G 2S0  
519-392-6623  
[www.southbruce.ca](http://www.southbruce.ca)

 @municipalityofsouthbruce  
 @municipalityofsouthbruce  
 @MunSouthBruce